

CEILING LOUDSPEAKER HUSAR GSW TYP AS



PRODUCT GROUP

HUSAR PA

PRODUCTS IN SERIES

HUSAR GSW6 TYP AS



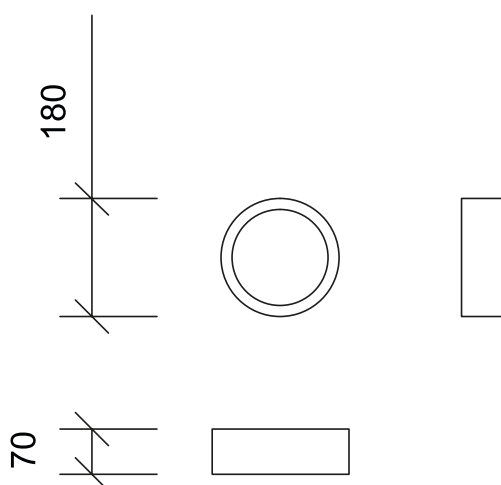
Scan for more detailed information
about the met standards
and testing of this product

- ✓ Ceiling installation
- ✓ 4 power taps
- ✓ Good quality sound reproduction
- ✓ Optional top cover for better sound reproduction
- ✓ Appropriate to be used inside station buildings (waiting rooms – station halls)
- ✓ Quick installation system
- ✓ For top sound 2 way 10W option available HUSAR GSW10
- ✓ Full compliance with present Polish Railways standard (PKP PLK S.A. approval)

Round shape **HUSAR GSW6** Type As ceiling loudspeaker is an aesthetically pleasing speaker for indoor, in-ceiling mounting. The speaker, made with 100 V technology, has a nominal power of 6 W and additional 3 power taps. It is designed for use in station halls and waiting rooms, where suspended ceilings are present. Additional internal round cover may be ordered for better sound reproduction (direction). For more quality of sound and more SPL the 2 way 10 W version is available : ordering item symbol is HUSAR GSW10. Is shall be used when suspended ceiling is higher or the quality of BGM is important. The speaker is part of the HUSAR PA product group and works perfectly with the HUSAR WZM series power amplifiers.



TECHNICAL DATA OF CEILING LOUDSPEAKER HUSAR GSW TYP AS



Technical parameters	HUSAR GSW6 Type As	HUSAR GSW10 Type As
Application	Suspended ceiling	
Speaker type	130 mm wideband	130 mm 2 way full range
Rated power	6W	10W
Driver impedance	8 ohm	
Impedance 100V	1666/3333/6666/13333	1000/1667/3333/6667
Tappings 100V	6/3/1,5/0,75 W (100V)	10/6/3/1,5 W (100V)
Effective frequency range	150-19400 Hz	75-25100 Hz
SPL 1W/1m	88	89
SPL Pmax/1m	96	108
Dispersion -6dB, 500 Hz/1 kHz/2 kHz/4kHz [°]	180/175/130/65	180°/170°/105°/55°
Connector	Plastic connector wago type	
Temperature range	-10 °C do +55 °C	
Enviromental type	A	
IP rate	21	
Dimensions	188x110 mm (cut off 165-170 mm)	
Weight	0,95 kg	1,2 kg
Housing	Metal grill and frame	

This data sheet is commercial in nature. If more detailed technical information is required, the reference document is the technical and operating documentation to be obtained from the manufacturer. In addition, the manufacturer reserves the right to make changes regarding the parameters, specifications and characteristics of the product. The dimensions of optional products, manufactured to order, will have different dimensions than those shown in this sheet. The document of general terms and conditions of supply can be found on the manufacturer's website - www.railway-systems.eu