

CEILING LOUDSPEAKER **HUSAR GSW TYPE AS**



PRODUCT GROUP
HUSAR PA

PRODUCTS IN SERIES
HUSAR GSW6 TYPE AS



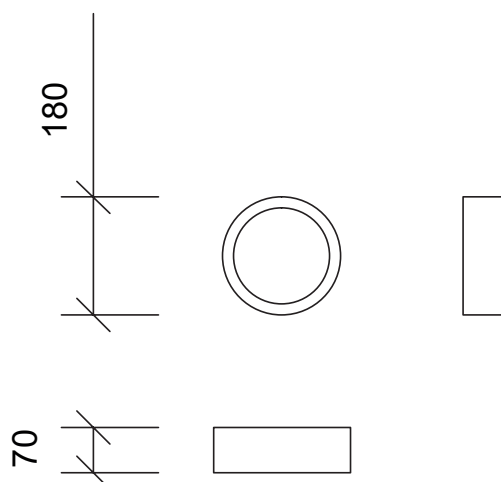
Scan for more detailed information on the met standards and tests of this product.

- ✓ Ceiling installation
- ✓ 4 power taps
- ✓ Good quality sound reproduction
- ✓ Optional top cover for better sound reproduction
- ✓ Appropriate to be used inside station buildings (waiting rooms – station halls)
- ✓ Quick installation system
- ✓ For top sound 2 way 10W option available HUSAR GSW10

HUSAR GSW6 Type As ceiling loudspeaker is an aesthetically pleasing loudspeaker for indoor installation, in the suspended ceiling. The speaker, made with 100 V technology, has a nominal power of 6 W and additional 3 power taps. It is designed for use in station halls and waiting rooms, where suspended ceilings are present. The speaker is part of the **HUSAR PA** product group and works perfectly with the **HUSAR WZM** series power amplifiers.

TECHNICAL DATA OF CEILING LOUDSPEAKER

HUSAR GSW TYPE AS



Technical parameters	HUSAR GSW6 Type As	HUSAR GSW10 Type As
Application	Suspended ceiling	
Speaker type	130 mm wideband	130 mm 2 way full range
Rated power	6W	10W
Driver impedance	8 ohm	
Impedance 100V	1666/3333/6666/13333	1000/1667/3333/6667
Tappings 100V	6/3/1,5/0,75 W (100V)	10/6/3/1,5 W (100V)
Effective frequency range	150-19400 Hz	75-25100 Hz
SPL 1W/1m	88	89
SPL Pmax/1m	96	108
Dispersion -6dB, 500 Hz/1 kHz/2 kHz/4kHz [°]	180/175/130/65	180°/170°/ 105°/ 55°
Connector	Plastic connector wago type	
Temperature range	-10 °C do +55 °C	
Enviromental type	A	
IP rate	21	
Dimensions	188x110 mm (cut off 165-170 mm)	
Weight	0,95 kg	1,2 kg
Housing	Metal grill and frame	

This data sheet is commercial in nature. If more detailed technical information is required, the reference document is the technical and operating documentation to be obtained from the manufacturer. In addition, the manufacturer reserves the right to make changes regarding the parameters, specifications and characteristics of the product. The dimensions of optional products, manufactured to order, will have different dimensions than those shown in this sheet. The document of general terms and conditions of supply can be found on the manufacturer's website - www.railway-systems.eu