

FALCON PSIM



PRODUCTS IN SERIES FALCON PSIM



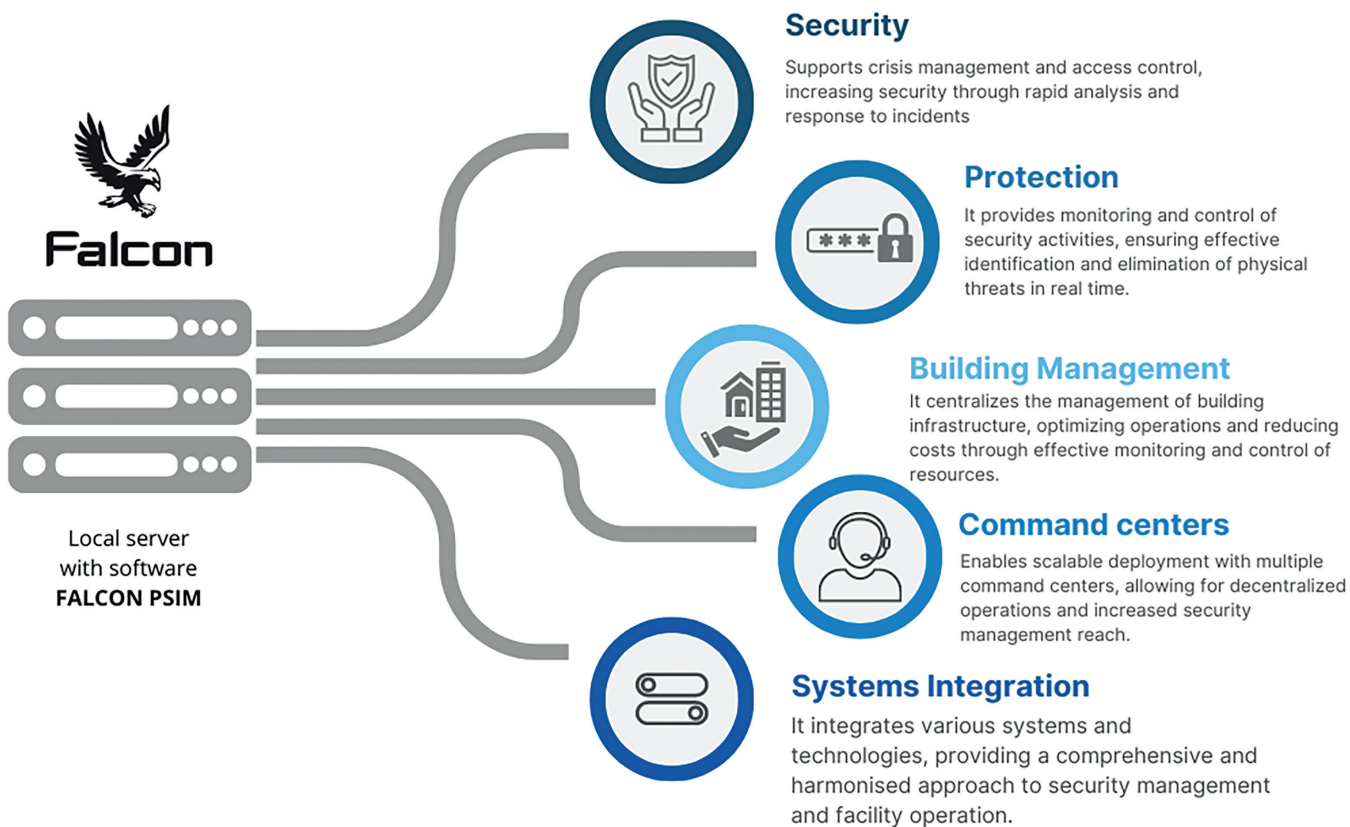
Scan for more detailed information on the met standards and tests of this product.

- ✓ One management point of all security, fire, and automation systems on the train station
- ✓ Modular architecture
- ✓ Easy customization – not a box solution
- ✓ Flexibility
- ✓ Detailed reporting
- ✓ Implementation of pre-programmed automatic procedures at the station
- ✓ Assigning access levels in subordinate systems
- ✓ Customized GUI

FALCON PSIM is a unified platform to create a coherent security and management system for railways stations.

FALCON PSIM enables the integration into a single environment of systems like CCTV, AC, BA, FAS, VES, GES, BMS building management systems, passenger information system, and other devices and applications used at the train station or platforms. Proper and well-designed integration of elements allows interconnection and complementarity of operating systems, which improves the operation of the entire platform, increases security in the area of its operation and facilitates management.

FALCON PSIM provides bidirectional, fully digital control of managed systems and information management. It has the ability to control integrated systems, e.g. defining access level in the access control system, locking system readers in the telecommunication cabinets for CCTV or passenger information system, etc. By integrating into one efficient system, management and control can be done from a single management center. Maintenance is easier and more efficient, especially in the case of a decentralised structure.



TECHNICAL DATA OF FALCON **PSIM**

Technical data	
System architecture	Client-server
Connection between operator's desk and the server	Based on encrypted API HTTPS
Connection and communication between PSIM Falcon and sub systems	Based on each vendor's API/SDK interfaces. The system provides bi-directional control of managed systems and management information and allows the receipt of
Operator's application	In desktop form installed on the operator station in the operating system environment specific to the PSIM software offered
Software architecture	System based on scalable software with modular architecture and fully available in Polish language version
Accesses	The system gives authorised users access to the various subsystems managed by the solution
Accesses levels	Configuration by PSIM administrator
System configuration server module designed for the administrator	Yes
Server configuration module	Displays all the properties available in the slave systems under PSIM control, so that the administrator has a single, consolidated platform to configure all aspects of the security integration process and device management
Administration accounty	With the highest privilege level available in the system. Any change to a user's rights made by the administrator is effective the next time the user logs on to the system.
System features	Expanding functionality according to future plans, with support for further sub-system devices added as required. At the same time, the system has the ability to plot existing and new devices on site maps for visualisation.
Database records	It records all the data specified by the client from all the slave systems, as well as the operations performed by the operators. Possibility of creating freely detailed reports allowing the diagnosis of any errors or instability in the slave systems, as well as contributing to the identification of solutions that could be replaced by others in order to obtain better functionality
GUI	Assigning a user to a group and a group of users to a security resource
Local Group admin	Manage the user rights of your group
Logout	The system allows any user to be logged off remotely by the system administrator in real time

This data sheet is commercial in nature. If more detailed technical information is required, the reference document is the technical and operating documentation to be obtained from the manufacturer. In addition, the manufacturer reserves the right to make changes regarding the parameters, specifications and characteristics of the product. The dimensions of optional products, manufactured to order, will have different dimensions than those shown in this sheet. The document of general terms and conditions of supply can be found on the manufacturer's website - www.railway-systems.eu