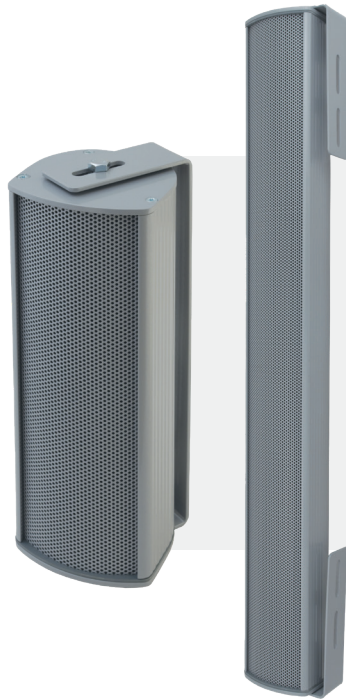


# SOUND COLUMNS

## HUSAR PA GKZ TYPE BK



### PRODUCT GROUP

#### HUSAR PA

### PRODUCTS IN SERIES

**HUSAR GKZ10 TYPE BK,  
HUSAR GKZ20 TYPE BK,  
HUSAR GKZ40 TYPE BK,  
HUSAR GKZ60 TYPE BK**



Scan for more detailed information on the met standards and tests of this product.

- ✓ Dedicated to tunnels, station halls, footbridges, platforms etc
- ✓ Good directivity combined with wide frequency response
- ✓ Wide selection of power and sizes in the series - 4 types of columns
- ✓ 4 power taps in each column
- ✓ High IP-65 protection rate
- ✓ Wide operating temperature range -25 C + 70 C
- ✓ Standard RAL 9006 (grey) color  
- other RAL color on request

The **HUSAR PA GKZ TYP BK** series of sound columns is represented by 4 models with different power ratings and sizes (see specifications on the next page). The speakers are suitable wherever a combination of good directivity with higher sound quality and wide frequency response is required. They are designed for outdoor and indoor installation, in station halls, for tunnels or covered footbridges connecting platforms, or on the platforms themselves. For long-term performance, installation under a kind of shelter is recommended. The columns are part of the **HUSAR PA** product group and work perfectly with the **HUSAR WZM** series power amplifiers.

## TECHNICAL DATA OF SOUND COLUMNS

### HUSAR PA GKZ TYPE BK

Technical data	HUSAR GKZ 10	HUSAR GKZ 20	HUSAR GKZ 40	HUSAR GKZ 60
Speaker type	2x77mm, wideband	4x77mm, wideband	6x77mm, wideband	8x77mm, wideband
Rated power [W]	10	20	40	60
Driver impedance [Ω]	4-8	4-8	4-8	4-8
Impedance, 100V [Ω]	1000/1666/3333/6666	410/530/840/1690	250/500/1000/2000	140/260/520/1040
Power tapings 100V [W]	10/6/3/1,5	20/15/10/5	40/20/10/5	60/30/15/7,5
Frequency response (-10dB) [Hz]	125-20000	130-19000	120-13300	185-14600
SPL 1W/1m [dB]	86	89	91	97,4
SPL Pmax/1m [dB]	96	102	106	114,4
Dispersion -6dB, 500 Hz/1 kHz/2 kHz/4kHz [°]	V: 360/120/60/35; H: 360/190/130/90	V: 360/120/60/35; H: 360/190/130/90	V: 115/50/25/12,5; H: 360/185/155/80	V: 70/30/15/6; H: 360/185/170/95
Connection way	loudspeaker line cable inserted into the enclosure and connected to the transformer	loudspeaker line cable inserted into the enclosure and connected to the transformer	loudspeaker line cable inserted into the enclosure and connected to the transformer	loudspeaker line cable inserted into the enclosure and connected to the transformer
Operating temperatures range	<-25; +70>	<-25; +70>	<-25; +70>	<-25; +70>
IP rate	65	65	65	65
Weight	1,7 kg	3 kg	3,7 kg	5 kg
Color	RAL 9006 (grey)	RAL 9006 (grey)	RAL 9006 (grey)	RAL 9006 (grey)

*This data sheet is commercial in nature. If more detailed technical information is required, the reference document is the technical and operating documentation to be obtained from the manufacturer. In addition, the manufacturer reserves the right to make changes regarding the parameters, specifications and characteristics of the product. The dimensions of optional products, manufactured to order, will have different dimensions than those shown in this sheet. The document of general terms and conditions of supply can be found on the manufacturer's website - [www.railway-systems.eu](http://www.railway-systems.eu)*