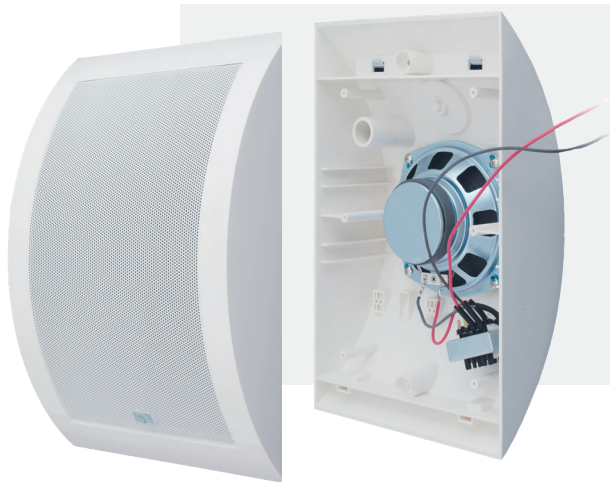


WALL – CEILING LOUDSPEAKER **HUSAR GNSW10 TYPE AS**



PRODUCT GROUP
HUSAR PA

PRODUCTS IN SERIES
HUSAR GNSW10 TYPE AS



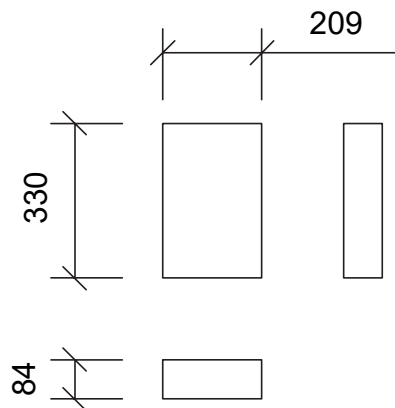
Scan for more detailed information on the met standards and tests of this product.

- ✓ Appropriate to be used inside station buildings
- ✓ Both ceiling or wall installation
- ✓ Elegant design – moon shaped and ABS housing
- ✓ High quality sound reproduction
- ✓ 4 power taps
- ✓ Optional full cover at the louvered ceiling

The elegant rounded **HUSAR GNSW10 Type As** wall-ceiling loudspeaker is an indoor, wall, proper or louvered ceiling loudspeaker (in the last case optional back cover must be ordered). Due to its elegant finish, the loudspeaker is ideal for indoor areas of a train station, such as waiting rooms or station halls that are not high, or any kind of passenger access and corridors. The loudspeaker, made with 100-volt technology, has a nominal power of 10 watts and an additional 3 power taps. The high IP 44 rating is preserved with a precise fit to the wall or ceiling proper or with the installation of an optional speaker cover. The loudspeaker is part of the HUSAR PA product group and works perfectly with HUSAR WZM series power amplifiers.

TECHNICAL DATA OF WALL – CEILING LOUDSPEAKER

HUSAR GNSW10 TYPE AS



Technical data	
Application	Indoor - wall, proper or louvered ceiling loudspeaker
Speaker type	130 mm wideband
Rated power	10 W
Driver impedance	8Ω
Impedance 100V	1000/1666/3333/6666 Ω
Tappings 100V	10/6/3/1,5 W
Effective frequency range	145-19000 Hz
SPL 1W/1m	96 dB
SPL Pmax/1m	101 dB
Dispersion -6dB, 500 Hz/1 kHz/2 kHz/4kHz [°]	180/170/125/60
Connector	Wago type quick connector
Temperature range	-10 °C do +55 °C
Enviromental type	A
IP rate	44
Dimensions	330x209x84 mm
Weight	1,2 kg
Housing	ABS housing / optional plastic back cover
Color	RAL 9010

This data sheet is commercial in nature. If more detailed technical information is required, the reference document is the technical and operating documentation to be obtained from the manufacturer. In addition, the manufacturer reserves the right to make changes regarding the parameters, specifications and characteristics of the product. The dimensions of optional products, manufactured to order, will have different dimensions than those shown in this sheet. The document of general terms and conditions of supply can be found on the manufacturer's website - www.railway-systems.eu